

TENGA MEN'S LOUPE

Sperm Observation Kit
for Smartphones



Of all couples having problems with getting pregnant, roughly half of the causes lie with the man. Have you ever thought about how healthy your sperm is?

Using their experience in sexual health and medicine, TENGA has launched a Sperm Observation Kit for Smartphones!

Take the first step a man can take towards pregnancy planning, or simply get to know your body better.



TENGA MEN'S LOUPE

Sperm Observation Kit
for Smartphones



1 Use the sample cup to take semen sample with pipette, and drop one drop onto slide.	2 Set the lens and Observation Plate onto Smartphone camera.	3 Turn on camera and observe.
		

Details

- 550x magnifying lens lets you observe sperm with ease.
- Observation may require adjustment. Please read Observation Tips inside User Manual.
- 4x Observation Slide Stickers included.

Usage Warning

- Product is not a contraceptive device.
- Do not point magnifying glass directly at the sun or bright lights.
- Do not store in direct sunlight.
- Product returns not accepted for open products.
- Keep away from children.
- TENGA Co., Ltd. can not be held liable for damages to Smartphones from use with this device.
- Image may vary according to Smartphone model and observation conditions.
- Product is not meant for medical analysis or decisions.

Product Inquiries

TENGA Customer Inquiries www.tenga-global.com/contact/

Produced by TENGA Co., Ltd.

Patent Pending

MADE IN JAPAN

TENGA MEN'S LOUPE

Sperm Observation Kit for Smartphones

User Manual

Always read instructions before use.

Features

- **550× magnifying lens lets you observe sperm with ease.**
- **Observation may require adjustment. Please read Observation Tips inside User Manual.**
- **This product is a simple Observation Kit and is not meant for medical analysis or decisions.**

How to Use

Taking Semen Sample

1) Take the Sample Cup and Pipette from the box. Spread open the Sample Cup and ejaculate into the cup. Leave the semen sample still for 5 minutes, and take a small sample with the Pipette. (Leaving the sample for 5 minutes will allow the semisolid parts of the semen sample to return to a liquid state, making it easier to take a pipette sample.)



Observation

Attaching Observation Plate to Magnifying Lens

2) Take the Observation Plate and Magnifying Plate from the box. Ensure Lens is inside the Magnifying Plate. On the underside of the Observation Plate (the black side) place a Observation Slide Sticker onto the observation ring.



3) Clean the front camera on your Smartphone from any dirt or fingerprints. Start your Smartphone's video front camera mode. Set the Magnifying Plate onto your Smartphone's front camera with the Lens at the center of the camera. You can attach it securely with the stickers on the back.

※ You can watch the Smartphone screen to ensure the Lens is in the correct position.



4) With the Observation Plate facing upward (the green side) drop a small sample (roughly the size of a grain of rice) onto the transparent sticky side of the Observation Slide Sticker.

※ Observation is possible with only a small amount of semen. Image may blur with too much semen.



5) With the Observation Plate facing upward (the green side) place the observation ring onto the Magnifying Lens, centering the ring on the Lens. Use one light source and shine directly, perpendicularly onto the camera.

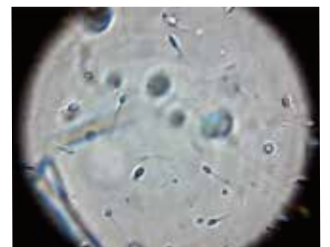
※ Multiple light sources will obscure the image. Move the Observation Plate to adjust focus.

※ Beware of dripping or spillage.

※ The stickers on the Magnifying Lens can be stuck onto and removed from your Smartphone several times. If they lose stickiness, wetting them may revive their adherence.



6) After observation, detach the Observation Plate from the Magnifying Lens, and remove the Observation Slide Sticker. If the Observation Plate, or the plate area of the Magnifying Lens is dirty, please clean lightly with a clean, slightly wet cloth and ensure the product is dry before storing.



Example of Observation Image

Specifications

Product Name: TENGA MEN'S LOUPE

Product Code: TML-001

Magnification Strength: 550x (*1)

Magnifying Lens: ϕ 0.8 Ball Lens

Attachment Method: Magnet

(*1) The Magnifying Lens is capable of optically magnifying 550x, but image on Smartphone will differ according to model of Smartphone, camera strength and screen resolution.

All images and photographs within this product are images and not an exact representation of how the product or image will look. This product does not include a Smartphone or any lighting equipment. Product specifications and features may change unannounced.

TENGA Customer Inquiries
www.tenga-global.com/contact/
Produced by TENGA Co., Ltd.
Patent Pending MADE IN JAPAN

Observation Tips

Adjusting lens and Smartphone

- The Magnifying Plate has stickers on the reverse side to attach it to your Smartphone. Please attach to secure it in place.
- If you have trouble finding where to place the Magnifying Plate, please watch your Smartphone Screen and ensure the center of the magnified image aligns with the center of the screen.
- Use the front-facing camera, and ensure the Smartphone is placed on a flat, level surface.

Adjusting lens and Smartphone

- Make sure there is only one light source. We recommend an LED spotlight.
- Ensure camera is facing light source. Adjust distance between camera and light source.
- It may be difficult to observe under daylight. Please ensure the room is dark and there is only one light source.
- If the Magnifying Plate is dirty, please clean with a soft cloth or cotton swab and ensure it is dry.

To Adjust Focus

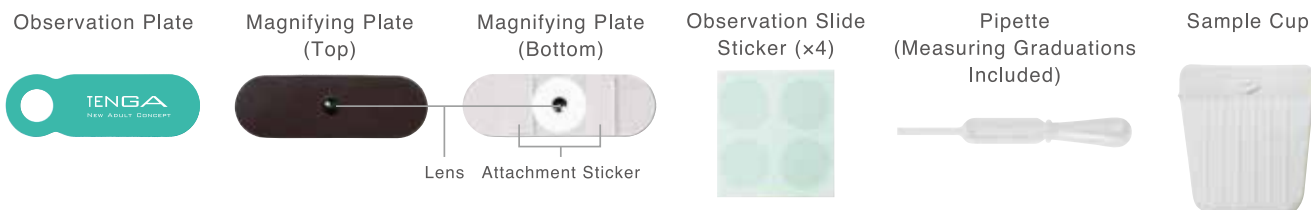
- Ensure there is no space between the Magnifying Plate and Observation Plate.
- Ensure magnets are firmly connected.
- If your Smartphone is not focusing, tap the screen to auto-focus.
- Observation is possible with only a small amount of semen. Image may blur with too much semen so please adjust by removing small amounts.

Viewing a Larger Image

- Using the back camera allows you to view images at a higher resolution. (Resolution may differ between Smartphone models.)

Sperm conditions change with body condition and conditions of observation - observe separate samples over several days.

Included Parts



Usage Warning Always read instructions before use.

○Product is not a contraceptive device. ○Do not point magnifying glass directly at the sun or bright lights. ○Do not store in direct sunlight. ○Do not place any semen onto the Magnifying Plate or Lens directly. ○Do not wash the Magnifying Plate with water. ○Do not bend the Magnifying Plate. This may break the product. ○Do not press the Magnifying Plate too strongly. This will distort the image. ○Be careful when attaching Observation Plate to Magnifying Plate. Too much friction may damage the Lens. ○Product returns not accepted for open products. ○This product is a simple Observation Kit and is not meant for medical analysis or decisions. ○Keep away from children. ○TENGA Co., Ltd. can not be held liable for damages to Smartphones from use with this device.